



ActiBush

Custom Products

Custom bushes

Modifying -Actibush will endeavour to modify an existing stock bush wherever possible to provide the quickest, most affordable option.

Custom made— where modifying isn't an option or there are special requirements we can custom make bushes to suit your requirements.

Tophat bushes

A bush with a top flange. Made from 1045 med tensile steel and then carburised and available either with or without grease grooves (internal/external)

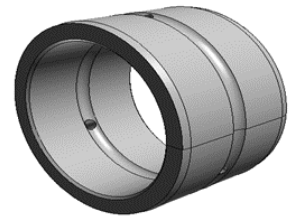
Can include a recessed lip to fit a pin seal.

Bosses

An exterior part made of 1045 med tensile steel. Often welded to a housing & holding a pin. Made with .2mm allowance for change in shape of the internal diameter when welded.

Sleeves

Made from 1045 med tensile steel and then carburised. Basically a bush without grease grooves- these are made to press fit.



At Actibush we are fortunate to have the backing of our sister company Active Engineering with their well-equipped workshop. They have skilled staff available to custom make your bush, boss, sleeve or pin to required tolerances. Please direct all sales enquiries to sales@actibush.co.nz or call our sales team on 09 475 9816

