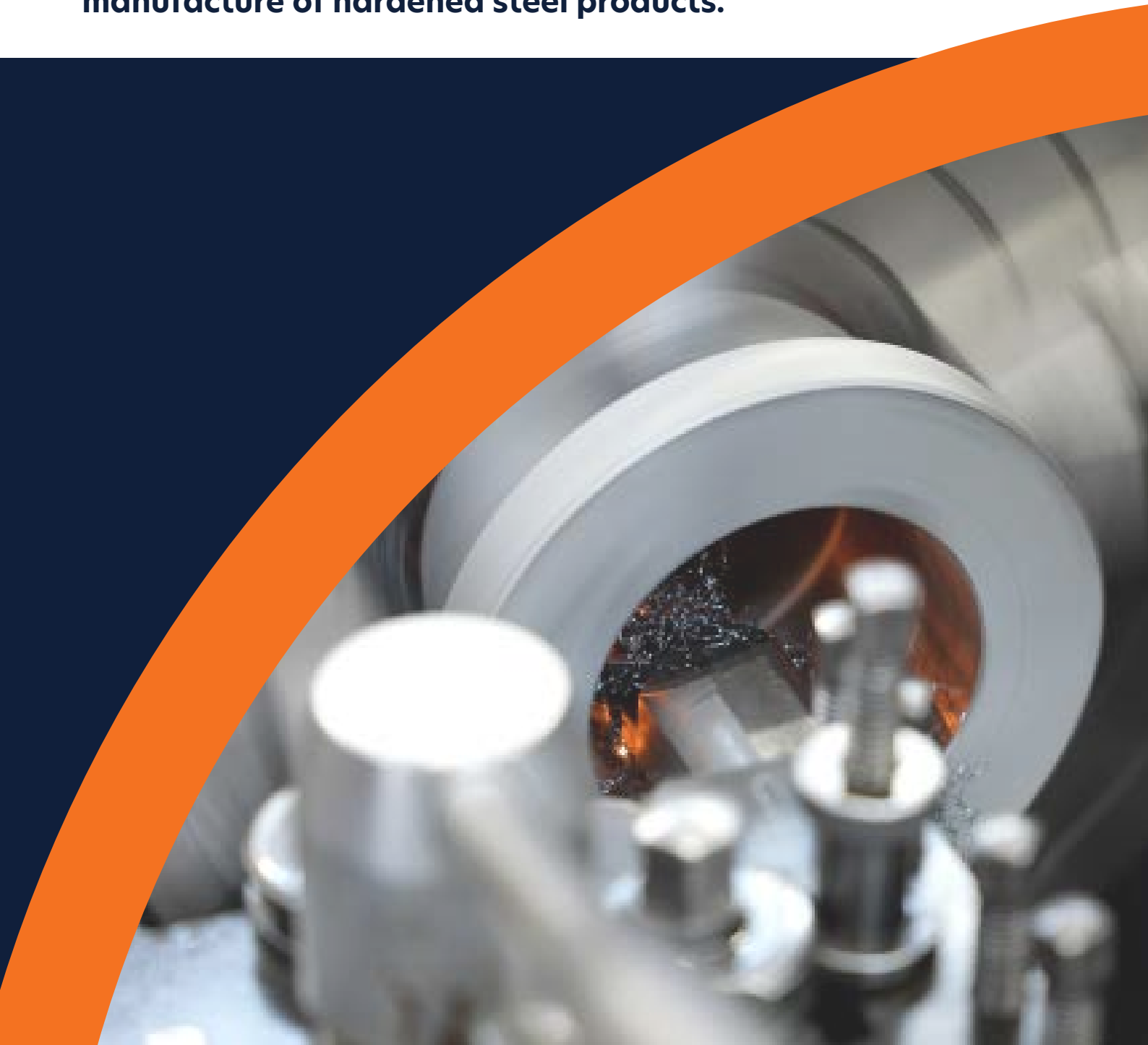




# *ActiBush*

**30 years** of experience in design and  
manufacture of hardened steel products.



# 8000 BUSHES in stock - ready to courier to you overnight.

## Metric

## Imperial

ID OD Long

ID OD Long

ID OD Long

ID OD Long

ID OD Long

ID OD Long

25	30	20
25	30	30
25	33	32
25	35	25
25	35	32
25	35	38
28	36	40
28	38	40

40	50	25
40	50	30
40	50	35
40	50	40
40	50	45
40	50	50
40	50	55
40	50	63
40	50	80
40	55	40

55	65	45
55	65	50
55	65	55
55	65	60
55	65	70
55	68	45
55	70	60
55	70	70
55	75	60

70	80	50
70	80	80
70	85	50
70	85	60
70	85	70
70	85	80
70	85	85
70	85	90
70	90	80
71	86	70
71	86	80
75	85	60
75	85	80
75	85	100
75	90	60
75	90	70
75	90	80
75	90	90
75	90	100

90	100	100
90	100	110
90	105	50
90	105	62
90	105	70
90	105	80
90	105	90
90	105	100
90	105	110
90	105	128
90	106	90
90	106	105
90	110	80
90	110	100
90	110	120
90	115	100

1"	1.25"	1"
1"	1.375"	1"
1"	1.375"	1.25"
1.25"	1.75"	1.5"
1.25"	1.75"	2"
1.5"	1.75"	1.25"
1.5"	1.75"	45mm
1.5"	1.75"	2"
1.5"	2"	1.5"
1.5"	2"	1.75"
1.5"	2"	2"
1.75"	2"	2"
1.75"	2.25"	1.5"
1.75"	2.25"	2"
1.75"	2.5"	2"
1.75"	2.25"	2"
1.75"	2.5"	2"

30	38	40
30	38	50
30	40	20
30	40	30
30	40	35
30	40	40
30	40	45
30	45	30
30	45	40
31.75	38	25
31.9	44	50
32	38	25
33	40	40
35	45	30
35	45	35
35	45	40
35	45	45
35	45	50
35	45	60
38	45	30
38	48	35
38	48	40
38	48	45
38	48	55
38.1	44	50

40	55	60
45	55	25
45	55	30
45	55	35
45	55	40
45	55	45
45	55	50
45	55	55
45	60	40
45	60	50
45	60	60
45	62	40
45	63	40

60	70	50
60	70	60
60	70	70
60	70	80
60	75	50
60	75	60
60	75	65
60	75	70
60	75	75
60	75	80
60	75	100
60	80	50
60	80	65
60	80	80

80	90	60
80	95	50
80	95	60
80	95	65
80	95	70
80	95	80
80	95	85
80	95	90
80	95	100
80	100	75
80	100	100
80	105	95
85	95	50
85	95	80
85	100	75
85	100	85
85	100	100

95	110	75
95	110	100
100	115	70
100	115	85
100	115	100
100	115	120
100	116	100
100	116	115
100	120	90
100	120	100
100	120	130
100	125	100

2"	2.5"	1.75"
2"	2.5"	2"
2"	2.5"	2.5"
2"	2.5"	3"
2"	2.5"	3.5"
2"	2.75"	2"
2.25"	2.75"	2"
2.25"	2.75"	2.75"
2.5"	3"	2"
2.5"	3"	2.5"
2.5"	3"	3"
2.5"	3"	3.5"
2.75"	3.25"	2.5"
2.75"	3.25"	3"

50	60	30
50	60	32
50	60	35
50	60	40
50	60	45
50	60	50
50	60	55
50	60	60
50	60	70
50	60	80
50	60	90
50	65	50
50	65	60
50	65	70
50	70	50

65	75	50
65	75	60
65	75	65
65	75	75
65	80	50
65	80	60
65	80	65
65	80	70
65	80	80
65	80	100
65	85	60
65	85	80

110	125	100
110	125	125
110	125	150
110	130	130
120	135	95
120	135	120
120	140	120

3"	3.5"	2"
3"	3.5"	3"
3"	3.5"	3.5"
3.5"	3.75"	3"

Bushes  
58-62  
Rockwell  
hardened

















**NZ MADE • NZ TOUGH • NZ QUALITY**

Metric & Imperial • Suppliers of bushes and pins •  
Suppliers of shims & pin seals  
Over 8000 bushes in stock • Over 200 sizes

sales@actibush.co.nz  
09 475 9816  
www.actibush.co.nz



# Contents

Page	Code		Description
1			Stock Bushes
2			Drawings Index
3			Our Products
5			Our Story
6	<b>Bush 1</b>		Standard Actibush
7	<b>Bush 2</b>		Bush with 3 x internal grease grooves
8	<b>Bush 3</b>		Bush with external groove and internal spiral
9	<b>Bush 4</b>		Bush with internal Spiral only
10	<b>Bush 5</b>		Sleeve with no grease grooves
11	<b>N</b>		Hardened plain pin
12	<b>NGC</b>		Hardened pin with no bolt hole and one counterbored greaseway
13	<b>NGGC</b>		Hardened pin with no bolt hole and two counterbored greaseway
14	<b>NB</b>		Hardened pin with bolt hole
15	<b>NBGC</b>		Hardened pin with bolt hole and one counterbored greaseway
16	<b>NBGGC</b>		Hardened pin with bolt hole and two counterbored greaseways
17	<b>OSB</b>		Round Slide on Tag hardened pin with bolt hole
18	<b>OSBGC</b>		Round Slide on Tag hardened pin with bolt hole and one counterbored greaseways
19	<b>OSBGGC</b>		Round Slide on Tag hardened pin with bolt hole and two counterbored greaseway
20	<b>RS</b>		RS Rectangular Slide on Tag hardened pin
21	<b>RSGC</b>		Rectangular Slide on Tag hardened pin with no bolt hole and one counterbored greaseway
22	<b>RSGGC</b>		Rectangular Slide on Tag hardened pin with no bolt hole and two counterbored greaseways
23			Product Overview



## BUSHES

### Stock Bushes

8000 bushes in stock over 200 sizes.

Acti-Bush bushes are 100% NZ made from quality steel and hardened to 58-62 Rockwell to ensure trouble free operation. All bushes are then passivated with a gold/silver coating reducing corrosion to give a longer life and easier replacement.



### Can't find your size?

Actibush can modify the OD, ID or length of any stock bush to suit almost any machine. This is done here in our workshop, usually in 1-2 working days.



### Custom Bushes

Actibush make custom hardened steel and bronze bushes to order, and we do this all here in New Zealand.

Whether it's a top hat bush, heavy walled bush for line boring, large bushes for heavy rated machines, we make them accurately cost-effectively and fast! Usually within 5-7 working days.



## BOSSSES, COLLARS, AND SLEEVES

Hardened or non-hardened, weld in bosses, lock collars, sleeves for a shrink fit, we can machine just about anything.

Contact us with your requirements and we will put together a quote.



## SHIMS AND TAGS

Actibush shims are NZ made, and laser cut from low carbon steel in a range of thicknesses. Actibush has over 40 sizes of stock shims, available for same day dispatch.

However, if you don't see the size you need, let us know and we can have custom shims made to order.

*“Our fast delivery is able to be provided by Acti-Bush holding a large stock of pre-hardened bar onsite, ready for drilling, machining or welding to your specifications.”*



## PIN SEALS

All of our standard seals are made with neoprene with a metal exterior. This makes them both strong and flexible as well as being easy to install.

If you are looking for a size not listed, don't stress... Actibush can source pin seals of almost any size, usually overnight, or we can get them custom made within a few days.



## PINS



High tensile core strength together with hardened steel outer surface gives you one of the toughest, hardest pins on the market, superior to most OEM products. Customer proven to last 2-3 times longer. Made from high tensile centreless ground steel stock, pins are cut to length then chamfered, drilled and tapped to your specifications.



We are able to offer the best lead times within the industry and deliver products direct to site with a full track and trace service. Actibush make pins are made order in our New Zealand workshop using 4140 high tensile steel bar stock Induction hardened to 58-62 HRC.

See our enclosed pin drawings, or visit [www.actibush.co.nz](http://www.actibush.co.nz) and use our Custom pin builder to create pins for almost any machine.



## HARD BAR

If you've got the gear and know how to machine your own pins, Actibush stock pre-hardened bar ready to go. Our hard bar is 4140 high tensile steel, induction hardened here in NZ. Sizes above 80mm are finish machined after hardening to ensure a true accurate sizing and perfect straightness.



# Our Story

Actibush was born out of a need for reliable replacement parts for heavy-duty equipment. Active Engineering Ltd (our sister company) found it difficult to source original replacement parts to repair earthmoving machinery, and the poor quality of many imported aftermarket parts resulted in premature failure.

The time required to heat treat and harden the parts properly meant that it was impossible to offer a same-day repair service, causing numerous delays.

To guarantee adequate supplies of hardened bushes, we began producing our range of common sizes. This soon expanded into a comprehensive range that could satisfy all types of machinery.

Demands from other machinery repair companies saw Actibush established as an independent leader in this sector.

We now supply bushes, pins, and tags to many companies throughout New Zealand with a reputation for providing the most durable parts, making us the first choice for those who want long-term reliability from their machinery.

We offer an ever-growing selection of pins and bushes tailored to fit your needs. Thanks to our special relationship with the heat treatment facility, we can create custom options quickly, so you don't have to wait long for what you need.

Our investment in our staff and manufacturing equipment allows us to be your reliable source of spare parts and materials.

All our products are NZ-made and designed to provide excellent wear and good value for money.

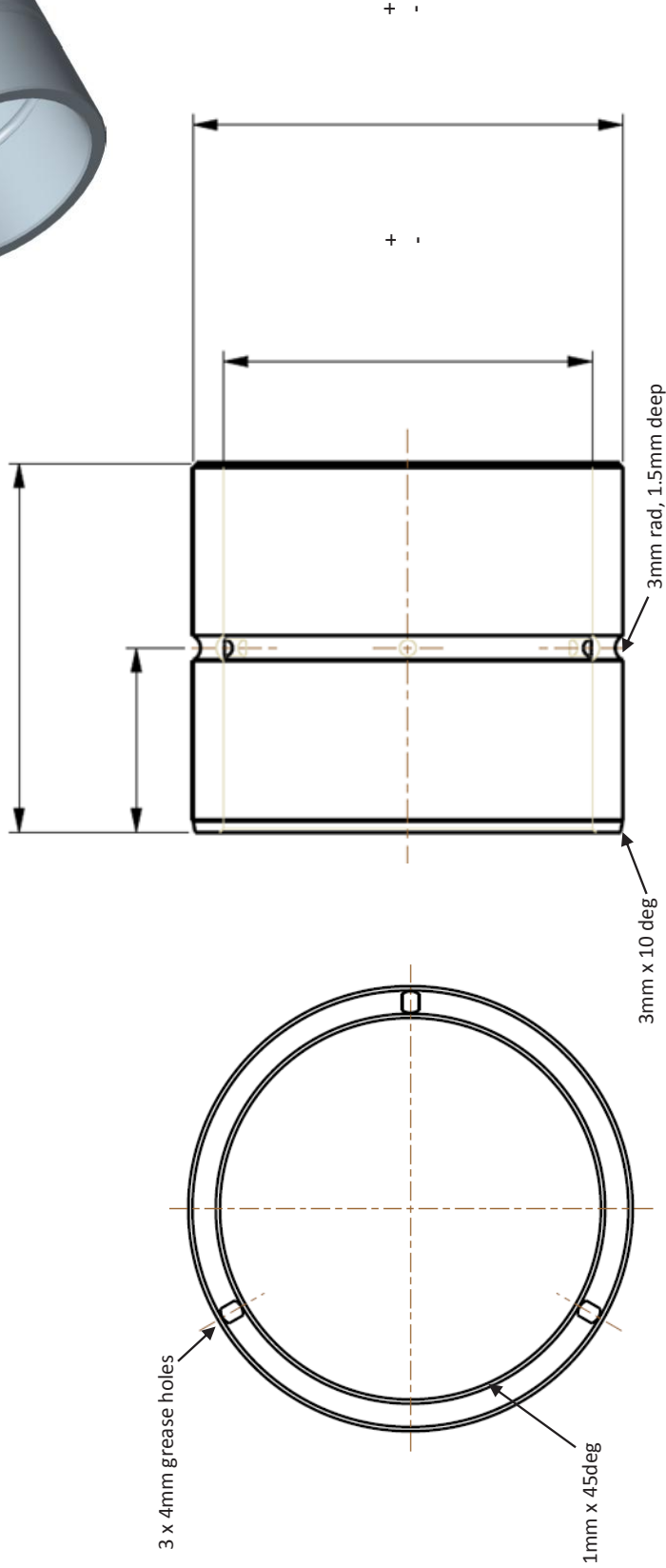
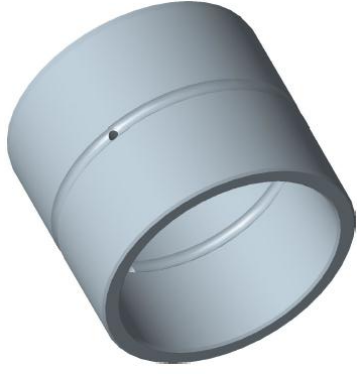
## 05.

19 Parkway Drive  
Mairangi Bay, Auckland



# ActiBUSH

Email: [sales@actibush.co.nz](mailto:sales@actibush.co.nz)  
Phone: 09 475 9816

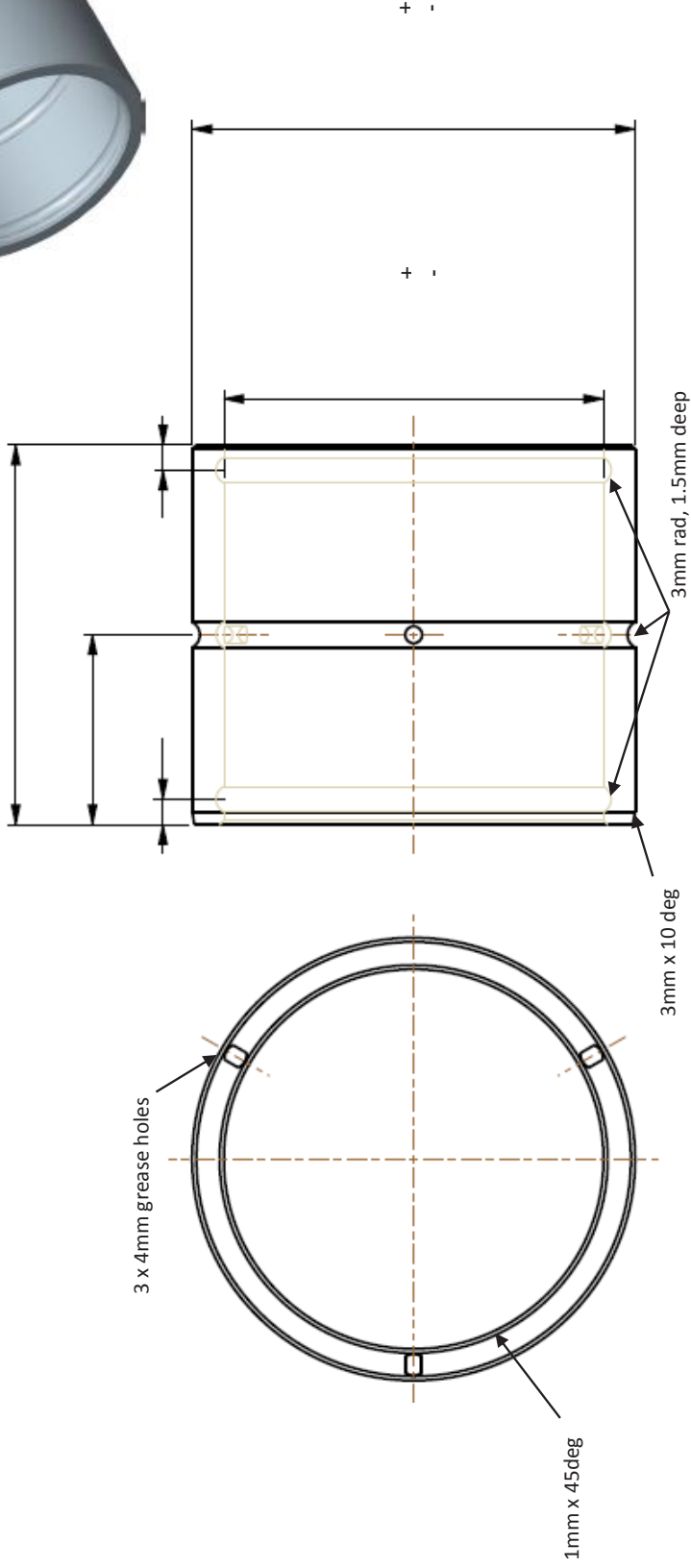


Drawing Code:	Bush 1	Quantity Required:	
Machine Make/Model:		Customer Order Number:	
Carburise:	<input type="checkbox"/>	Customer:	
Other:		Job Number:	



# ActiBUSH

Email: [sales@actibush.co.nz](mailto:sales@actibush.co.nz)  
 Phone: 09 475 9816



<b>Drawing Code:</b>	Bush 2	<b>Quantity Required:</b>	
<b>Machine Make/Model:</b>		<b>Customer Order Number:</b>	
<b>Carburise:</b>	<input type="checkbox"/>	<b>Customer:</b>	
<b>Other:</b>		<b>Job Number:</b>	

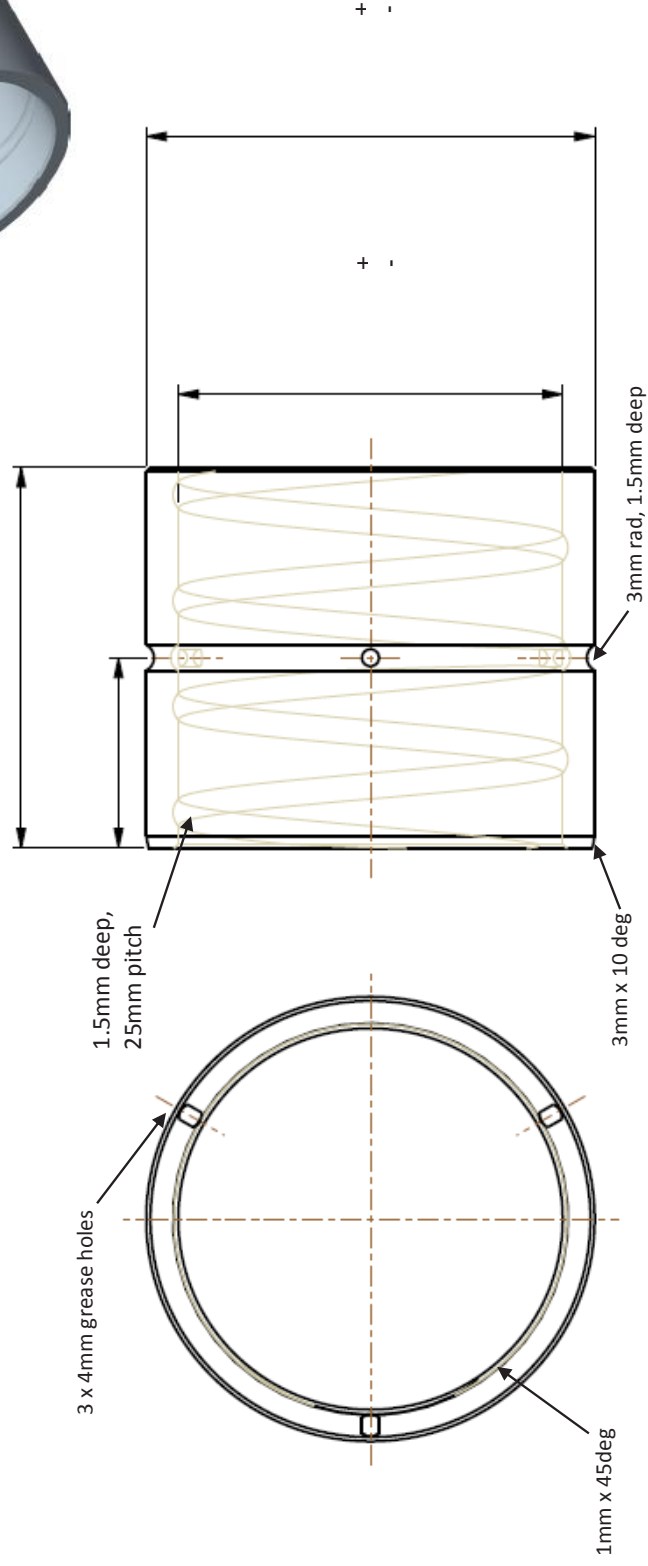
<b>Bush Standard</b>
Leading edge – 3mm x 10°
All grooves 3mm rad, 1.5mm deep
Spiral grooves 25mm pitch
Grease holes 4mm diameter



Email: [sales@actibush.co.nz](mailto:sales@actibush.co.nz)  
 Phone: 09 475 9816



# ActiBush

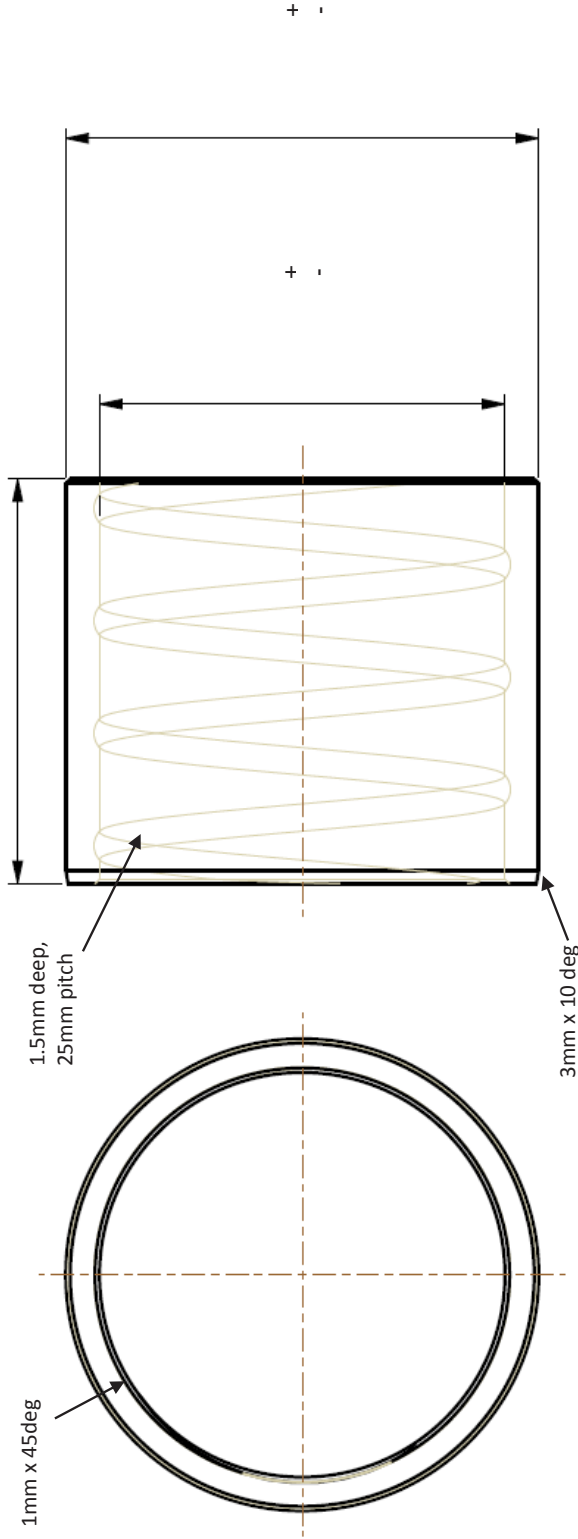


<b>Bush Standard</b>
Leading edge – 3mm x 10°
All grooves 3mm rad, 1.5mm deep
Spiral grooves 25mm pitch
Grease holes 4mm diameter

<b>Drawing Code:</b> Bush 3	<b>Quantity Required:</b>
<b>Machine Make/Model:</b>	<b>Customer Order Number:</b>
<b>Carburise:</b>	<b>Customer:</b>
<b>Other:</b>	<b>Job Number:</b>



# ActiBUSH

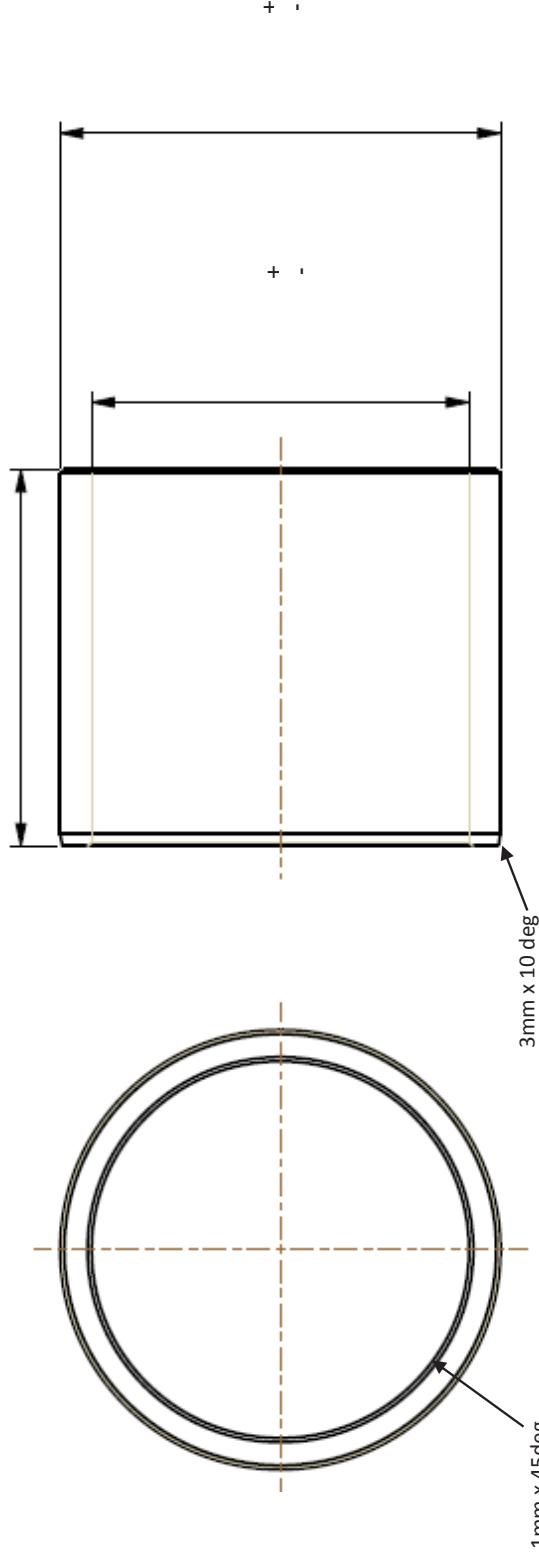
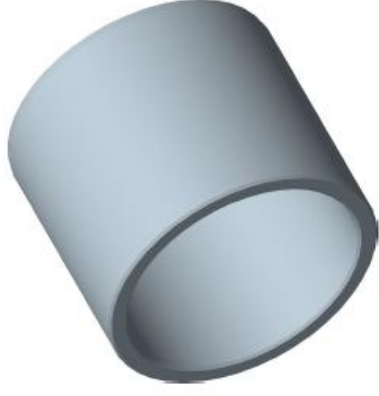


Drawing Code:	Bush 4	Quantity Required:	
Machine Make/Model:		Customer Order Number:	
Carburise:	<input type="checkbox"/>	Customer:	
Other:		Job Number:	

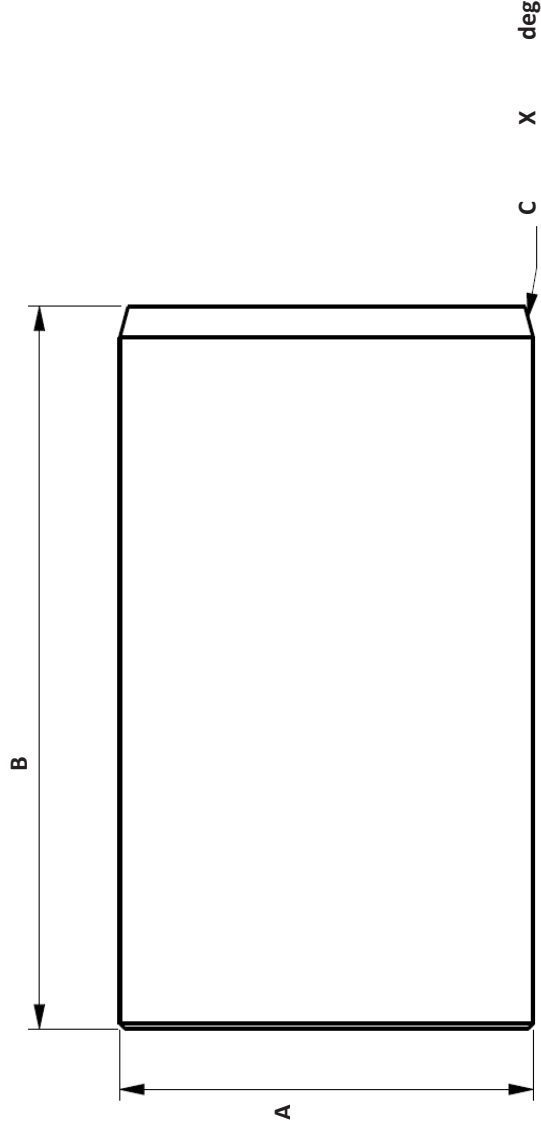
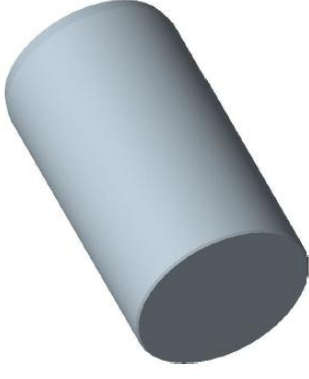
Email: [sales@actibush.co.nz](mailto:sales@actibush.co.nz)  
 Phone: 09 475 9816



# ActiBush



<b>Drawing Code:</b>	Bush 5	<b>Quantity Required:</b>	
<b>Machine Make/Model:</b>		<b>Customer Order Number:</b>	
<b>Carburise:</b>	<input type="checkbox"/>	<b>Customer:</b>	
<b>Other:</b>		<b>Job Number:</b>	
<b>Bush Standard</b>		Leading edge – 3mm x 10°	
		All grooves 3mm rad, 1.5mm deep	
		Spiral grooves 25mm pitch	
		Grease holes 4mm diameter	



Dimension	
A	Diameter
B	Length
C	Leading Edge
D	Leading end of pin to hole centre
E	End of pin to hole centre
F	Hole diameter
G	Greaseway length (end of pin to hole centre)
J	End of pin to first outlet
K	First outlet to second outlet

Pin Standard	
Leading edge – 3mm x 15° (default unless defined above)	
Greaseway – 5mm	
Counterbore – 1/8 BSP	
Undercut for recessed grease nipple – 2.1mm	

Drawing Code: N	Quantity Required:	
Machine Make/Model:	Customer Order Number:	
Induction Hardener:	Customer:	<input type="checkbox"/>
Other:	Job Number:	

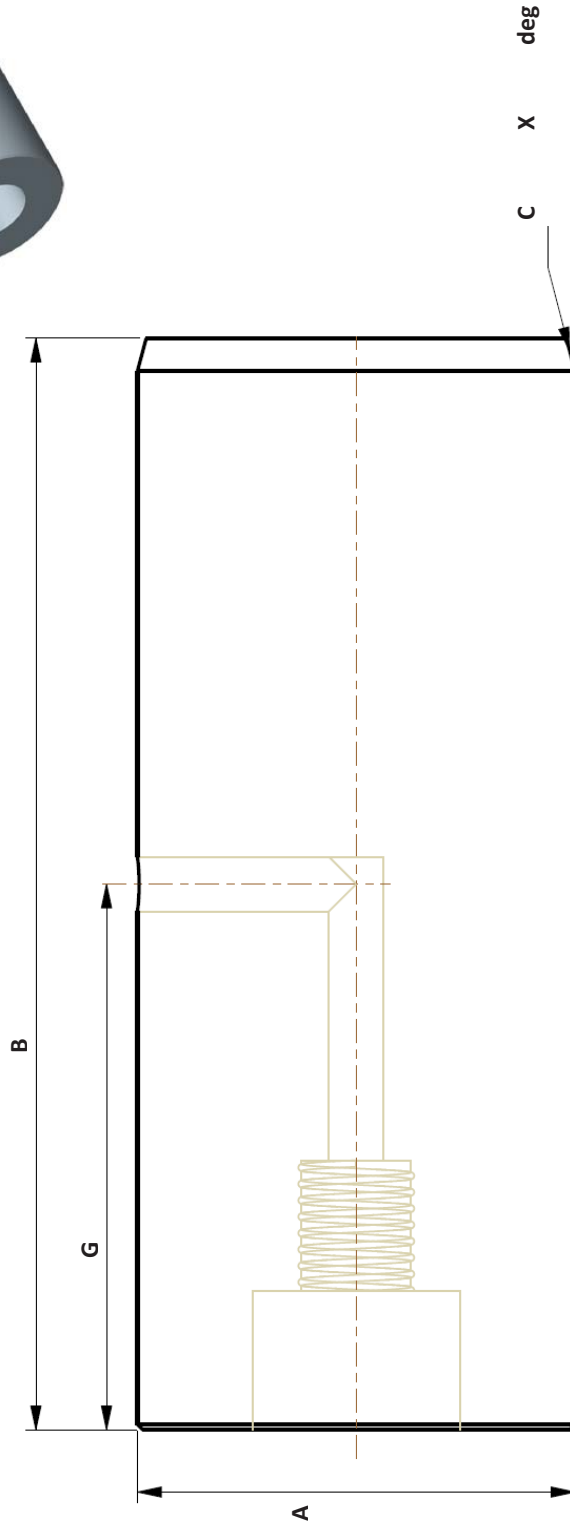
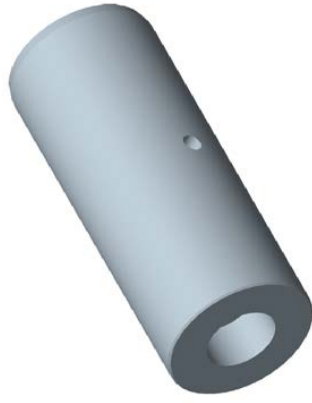


# ActiBush

Email: [sales@actibush.co.nz](mailto:sales@actibush.co.nz)

Phone: 09 475 9816

Fax: 09 478 8447



Dimension	
A	Diameter
B	Length
C	Leading Edge
D	Leading end of pin to hole centre
E	End of pin to hole centre
F	Hole diameter
G	Greaseway length (end of pin to hole centre)
J	End of pin to first outlet
K	First outlet to second outlet

Pin Standard	
Leading edge – 3mm x 15° (default unless defined above)	
Greaseway – 5mm	
Counterbore – 1/8 BSP	
Undercut for recessed grease nipple – 21mm	

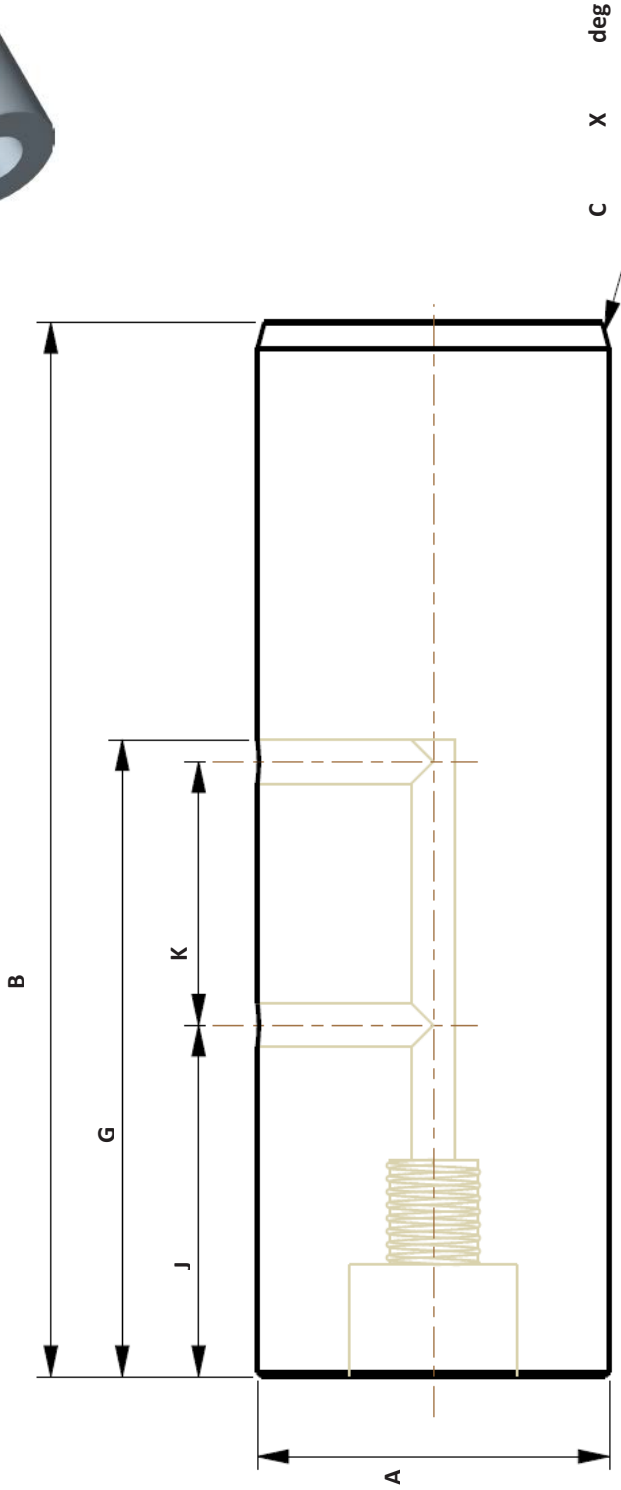
Drawing Code:	NGC	Quantity Required:	
Machine Make/Model:		Customer Order Number:	
Induction Harden:	<input type="checkbox"/>	Customer:	
Other:		Job Number:	





Email: [sales@actibush.co.nz](mailto:sales@actibush.co.nz)  
 Phone: 09 475 9816  
 Fax: 09 478 8447

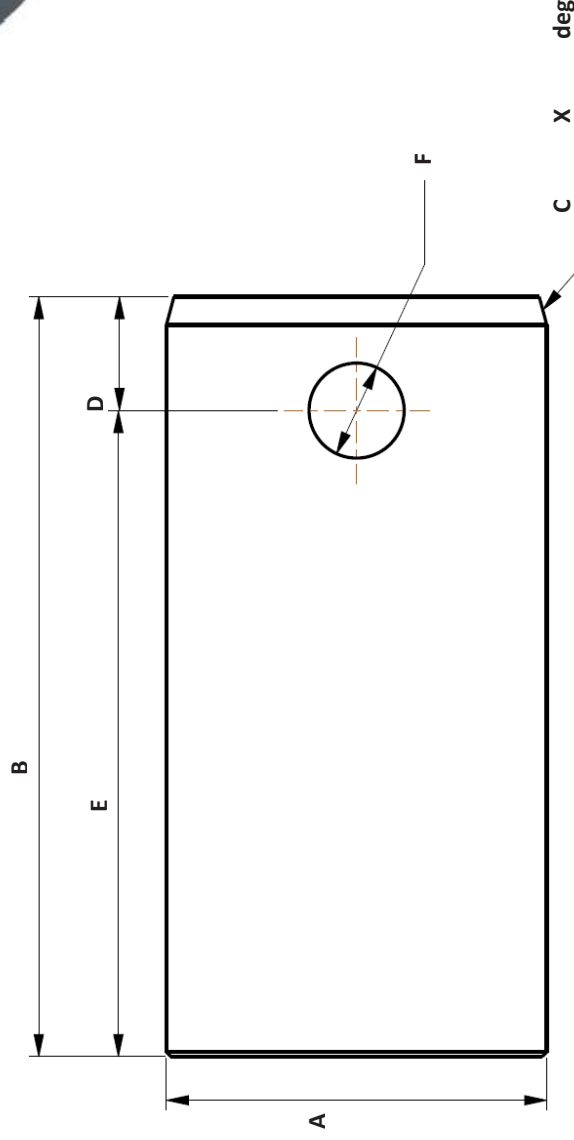
# ActiBush



Dimension	
A	Diameter
B	Length
C	Leading Edge
D	Leading end of pin to hole centre
E	End of pin to hole centre
F	Hole diameter
G	Greaseway length (end of pin to hole centre)
J	End of pin to first outlet
K	First outlet to second outlet

Pin Standard	
Leading edge – 3mm x 15° (default unless defined above)	
Greaseway – 5mm	
Counterbore – 1/8 BSP	
Undercut for recessed grease nipple – 2.1mm	

Drawing Code:	NGGC	Quantity Required:	
Machine Make/Model:		Customer Order Number:	
Induction Harden:	<input type="checkbox"/>	Customer:	
Other:		Job Number:	



Dimension	
A	Diameter
B	Length
C	Leading Edge
D	Leading end of pin to hole centre
E	End of pin to hole centre
F	Hole diameter
G	Greaseway length (end of pin to hole centre)
J	End of pin to first outlet
K	First outlet to second outlet

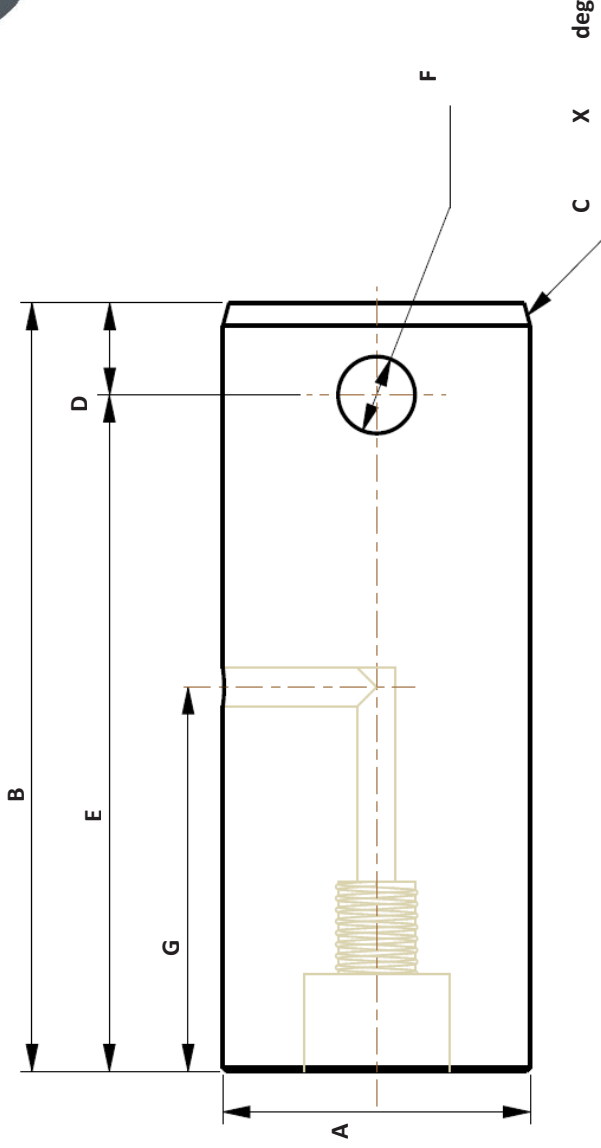
Pin Standard	
Leading edge – 3mm x 15° (default unless defined above)	
Greaseway – 5mm	
Counterbore – 1/8 BSP	
Undercut for recessed grease nipple – 2.1mm	

Drawing Code: NB	Quantity Required:	
Machine Make/Model:	Customer Order Number:	
Induction Harden:	Customer:	
Other:	Job Number:	



Email: [sales@actibush.co.nz](mailto:sales@actibush.co.nz)  
 Phone: 09 475 9816  
 Fax: 09 478 8447

# ActiBush



Dimension	
A	Diameter
B	Length
C	Leading Edge
D	Leading end of pin to hole centre
E	End of pin to hole centre
F	Hole diameter
G	Greaseway length (end of pin to hole centre)
J	End of pin to first outlet
K	First outlet to second outlet

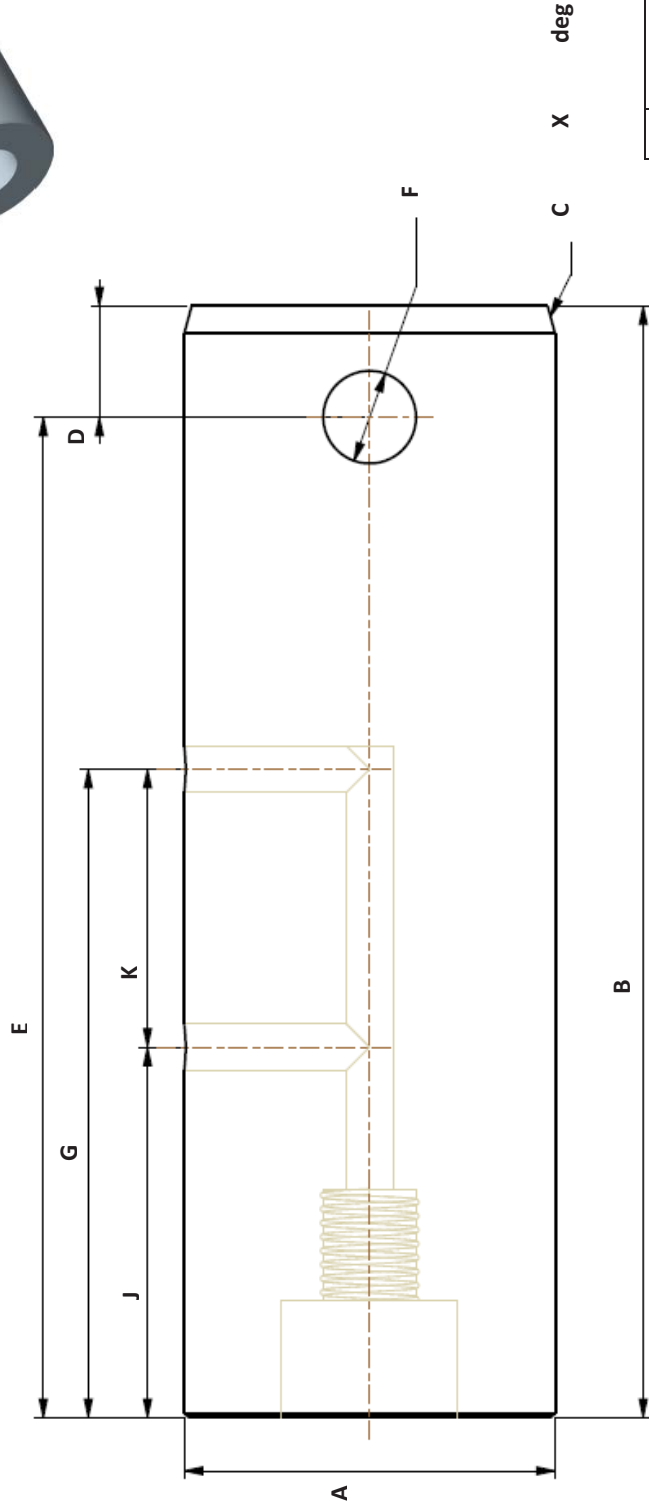
Pin Standard	
Leading edge – 3mm x 15° (default unless defined above)	
Greaseway – 5mm	
Counterbore – 1/8 BSP	
Undercut for recessed grease nipple – 2.1mm	

Drawing Code:	NBGC	Quantity Required:	
Machine Make/Model:		Customer Order Number:	
Induction Harden:	<input type="checkbox"/>	Customer:	
Other:		Job Number:	



Email: [sales@actibush.co.nz](mailto:sales@actibush.co.nz)  
 Phone: 09 475 9816  
 Fax: 09 478 8447

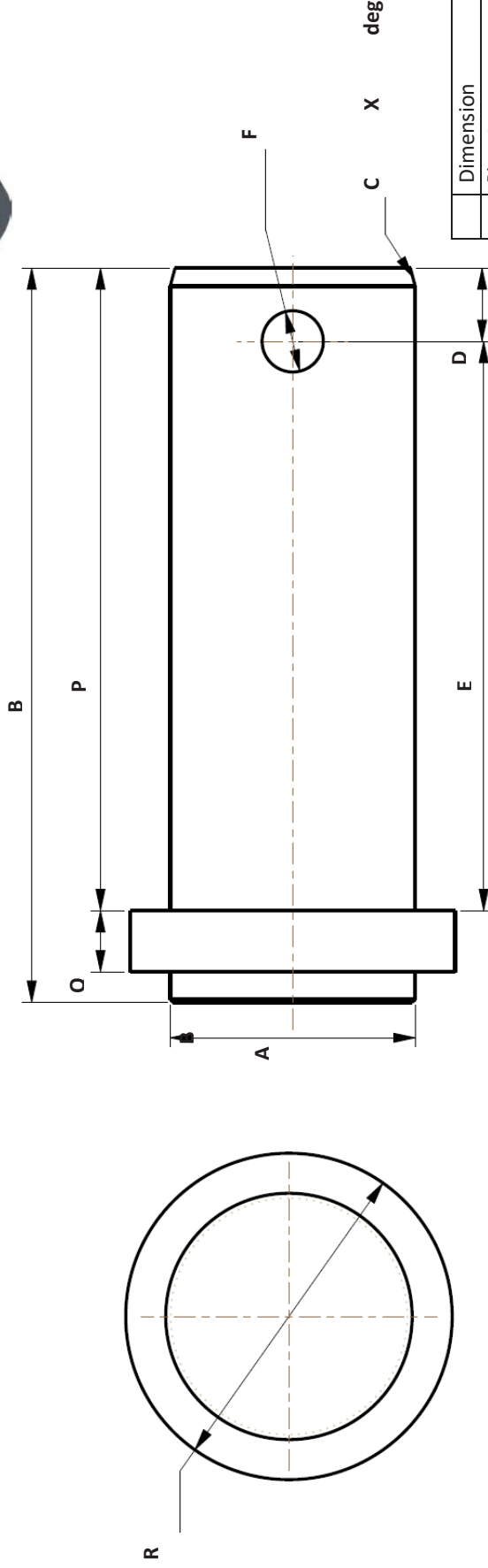
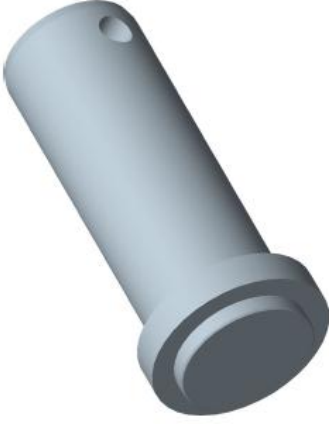
# ActiBush



Dimension	
A	Diameter
B	Length
C	Leading Edge
D	Leading end of pin to hole centre
E	End of pin to hole centre
F	Hole diameter
G	Greaseway length (end of pin to hole centre)
J	End of pin to first outlet
K	First outlet to second outlet

Pin Standard	
Leading edge – 3mm x 15° (default unless defined above)	
Greaseway – 5mm	
Counterbore – 1/8 BSP	
Undercut for recessed grease nipple – 2.1mm	

Drawing Code: NBGGC	Quantity Required:	
Machine Make/Model:	Customer Order Number:	
Induction Harden:	Customer:	
Other:	Job Number:	



Dimension	
A	Diameter
B	Length
C	Leading Edge
D	Leading end of pin to hole centre
E	End of pin to hole centre
F	Hole diameter
K	First outlet to second outlet
L	Greaseway length (centre of hole to inside tag face)
M	Inside face of tag to first outlet (centre of outlet)
P	Working area (length) of pin
Q	Tag thickness
R	Outer diameter of tag

Pin Standard	
Leading edge – 3mm x 15° (default unless defined above)	
Greaseway – 5mm	
Counterbore – 1/8 BSP	
Undercut for recessed grease nipple – 2.1mm	

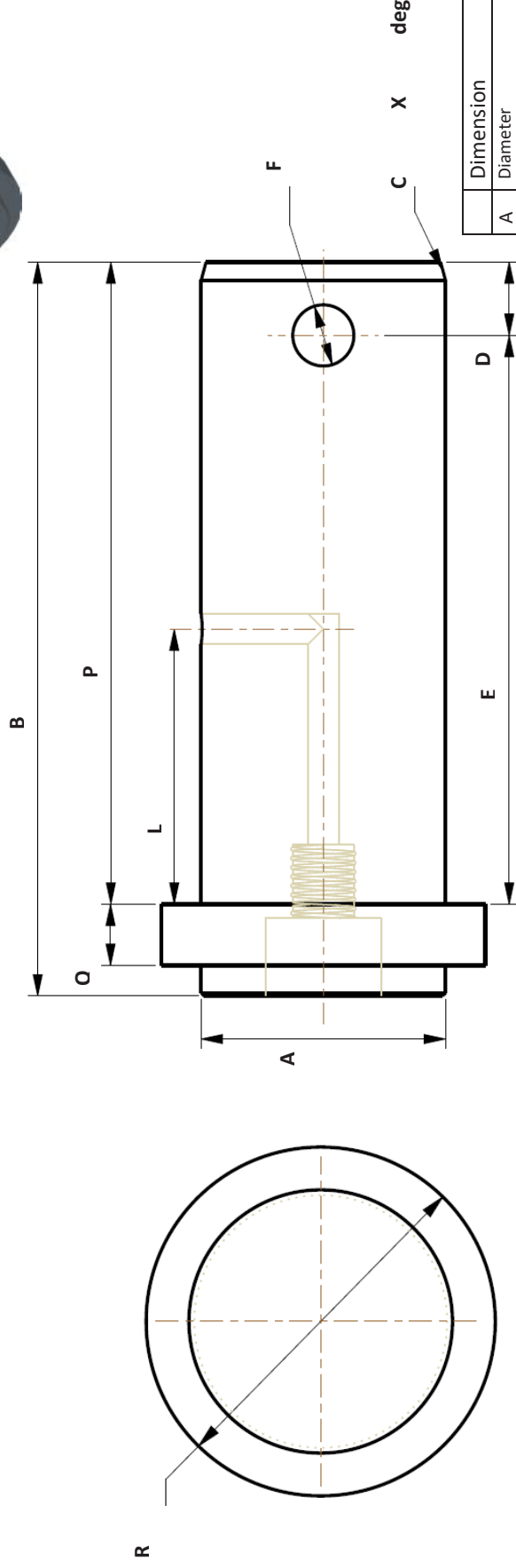
Drawing Code: OSB	Quantity Required:	
Machine	Customer Order Number:	
Make/Model:	Customer:	
Induction Harden:	Job Number:	
Other:		



Email: [sales@actibush.co.nz](mailto:sales@actibush.co.nz)  
 Phone: 09 475 9816  
 Fax: 09 478 8447



# ActiBush



Dimension	
A	Diameter
B	Length
C	Leading Edge
D	Leading end of pin to hole centre
E	End of pin to hole centre
F	Hole diameter
K	First outlet to second outlet
L	Greaseway length (centre of hole to inside tag face)
M	Inside face of tag to first outlet (centre of outlet)
P	Working area (length) of pin
Q	Tag thickness
R	Outer diameter of tag

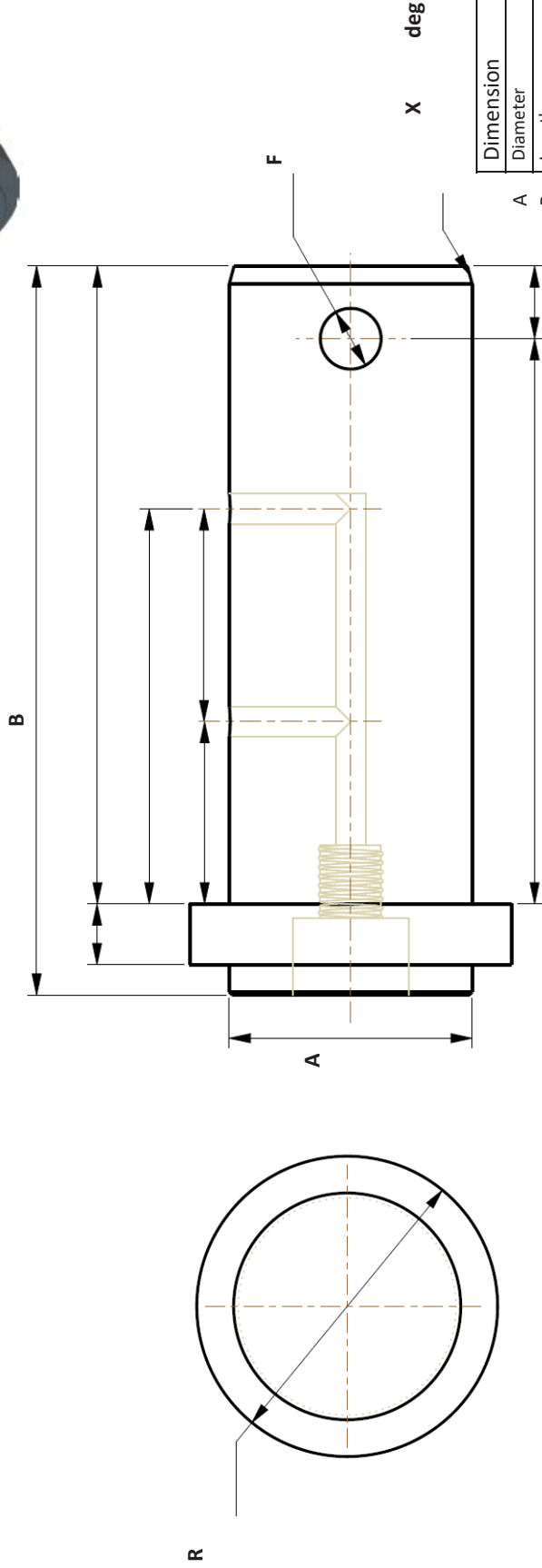
Pin Standard	
Leading edge	- 3mm x 15° (default unless defined above)
Greaseway	- 5mm
Counterbore	- 1/8 BSP
Undercut for recessed grease nipple	- 2.1mm

Drawing Code:	OSBGC	Quantity Required:	
Machine Make/Model:		Customer Order Number:	
Induction Harden:	<input type="checkbox"/>	Customer:	
Other:		Job Number:	



Email: [sales@actibush.co.nz](mailto:sales@actibush.co.nz)  
 Phone: 09 475 9816  
 Fax: 09 478 8447

# ActiBUSH



Dimension	
A	Diameter
B	Length
C	Leading Edge
D	Leading end of pin to hole centre
E	End of pin to hole centre
F	Hole diameter
K	First outlet to second outlet
L	Greaseway length (centre of hole to inside tag face)
M	Inside face of tag to first outlet (centre of outlet)
P	Working area (length) of pin
Q	Tag thickness
R	Outer diameter of tag

Pin Standard	
Leading edge – 3mm x 15° (default unless defined above)	
Greaseway – 5mm	
Counterbore – 1/8 BSP	
Undercut for recessed grease nipple – 2.1mm	

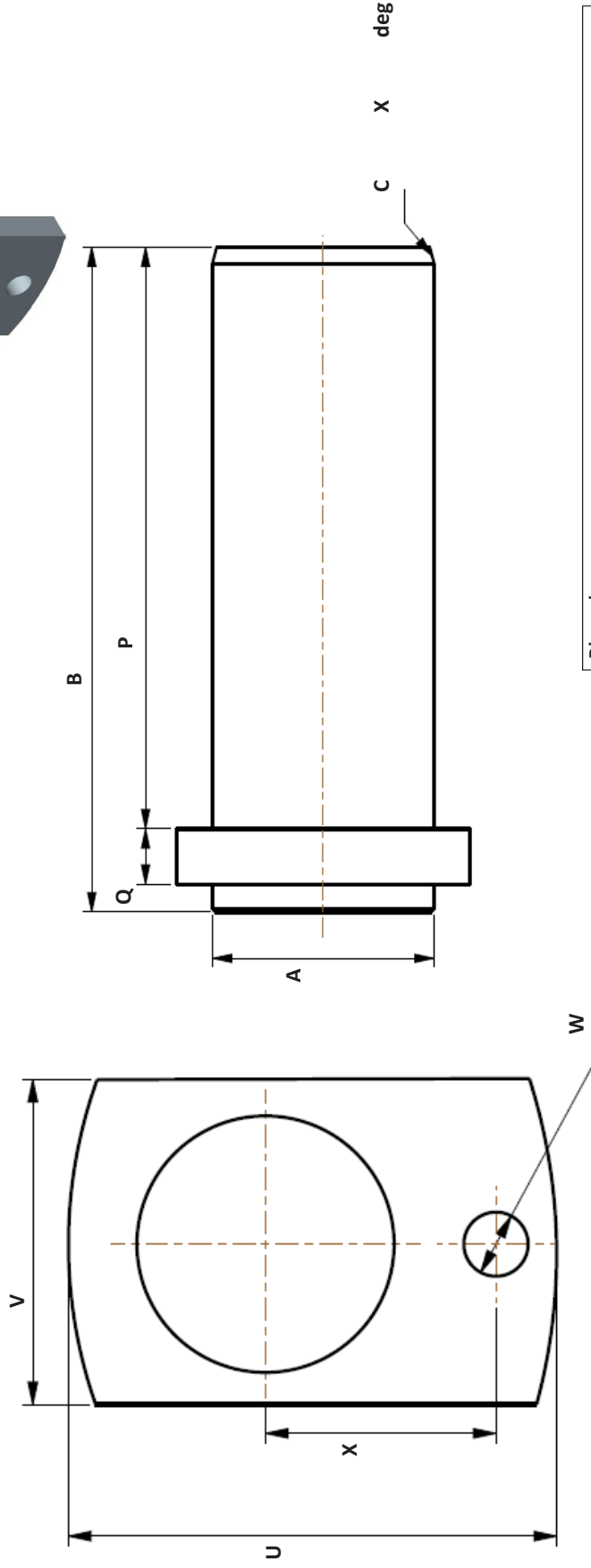
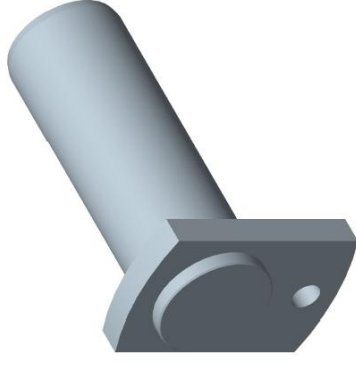
Drawing Code: OSBGGC	Quantity Required:
Machine Make/Model:	Customer Order Number:
Induction Harden:	Customer:
Other:	Job Number:



Email: [sales@actibush.co.nz](mailto:sales@actibush.co.nz)  
 Phone: 09 475 9816  
 Fax: 09 478 8447

# ActiBush

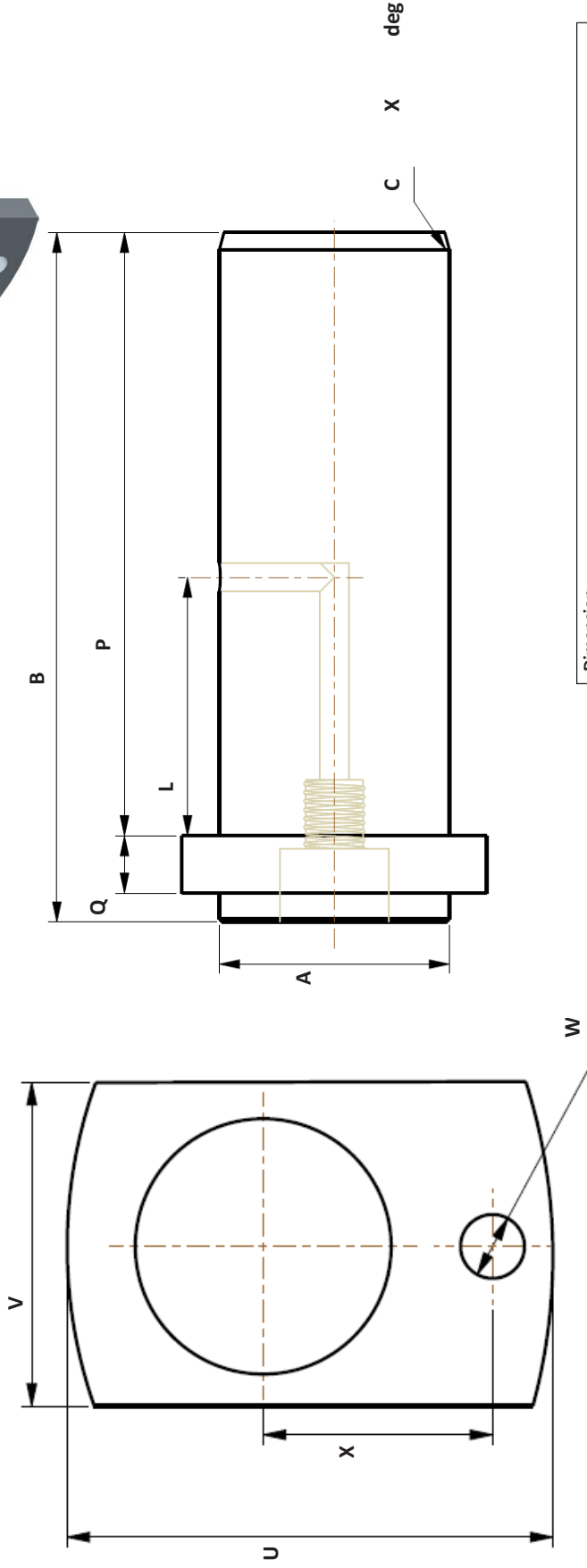
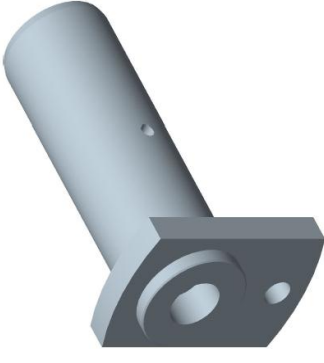
<b>Pin Standard</b>
Leading edge – 3mm x 15° (default unless defined above)
Greaseway – 5mm
Counterbore – 1/8 BSP
Undercut for recessed grease nipple – 21mm



Dimension	
A	Diameter
B	Length
C	Leading Edge
D	Leading end of pin to hole centre
E	End of pin to hole centre
F	Hole diameter
K	First outlet to second outlet
L	Greaseway length (centre of hole to inside tag face)
M	Inside face of tag to first outlet (centre of outlet)
P	Working area (length) of pin
Q	Tag thickness
U	Length of tag
V	Width of tag
W	Hole Diameter
X	Hole centre to hole centre

Drawing Code: RS	Quantity Required:
Machine Make/Model:	Customer Order Number:
Induction Harden:	Customer:
Other:	Job Number:

<b>Pin Standard</b>
Leading edge – 3mm x 15° (default unless defined above)
Greaseway – 5mm
Counterbore – 1/8 BSP
Undercut for recessed grease nipple – 2.1mm



Dimension		M	Inside face of tag to first outlet (centre of outlet)
A	Diameter		Working area (length) of pin
B	Length	P	Tag thickness
C	Leading Edge	Q	Length of tag
D	Leading end of pin to hole centre	U	Width of tag
E	End of pin to hole centre	V	Hole Diameter
F	Hole diameter	W	Hole centre to hole centre
K	First outlet to second outlet	X	
L	Greaseway length (centre of hole to inside tag face)		

Drawing Code:	RSGC	Quantity Required:	
Machine Make/Model:		Customer Order Number:	
Induction Harden:	<input type="checkbox"/>	Customer:	
Other:		Job Number:	

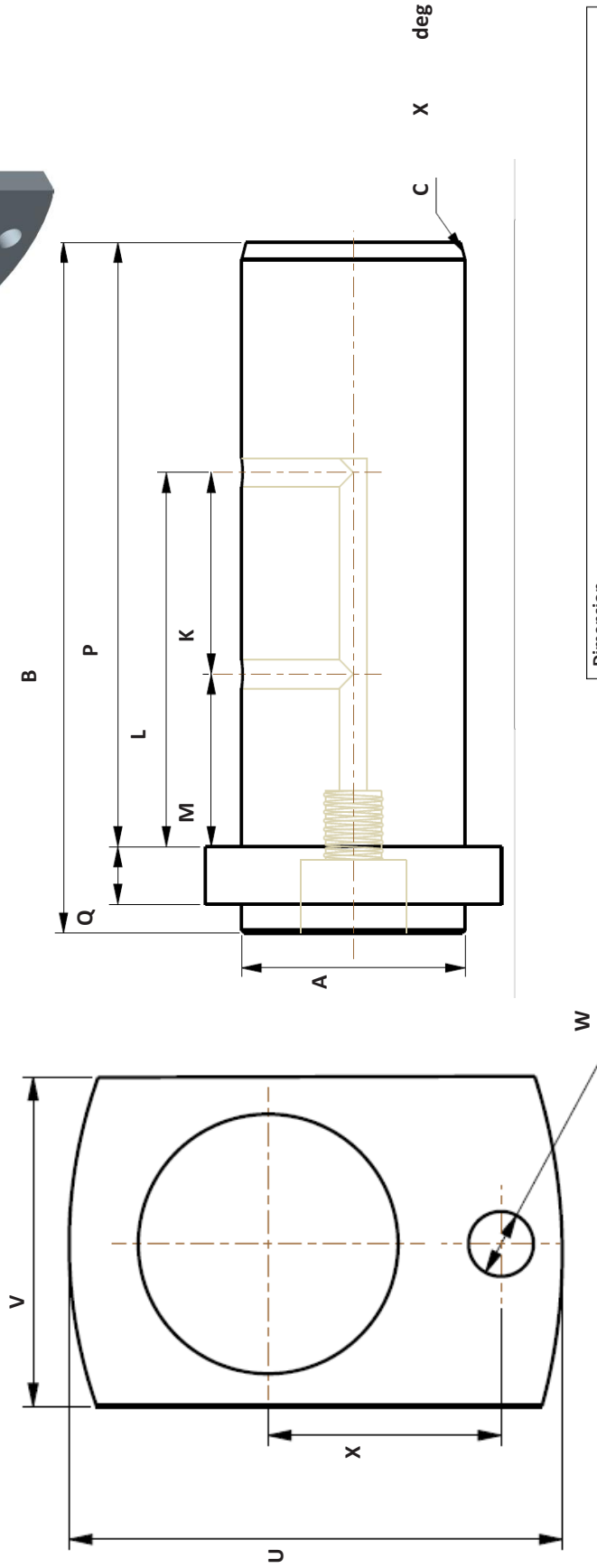
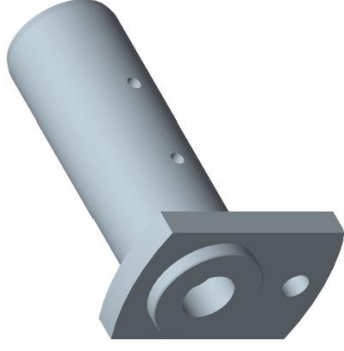


# ActiBush

Email: [sales@actibush.co.nz](mailto:sales@actibush.co.nz)  
 Phone: 09 475 9816  
 Fax: 09 478 8447

**Pin Standard**

Leading edge – 3mm x 15° (default unless defined above)  
 Greaseway – 5mm  
 Counterbore – 1/8 BSP  
 Undercut for recessed grease nipple – 2.1mm



Dimension	
A	Diameter
B	Length
C	Leading Edge
D	Leading end of pin to hole centre
E	End of pin to hole centre
F	Hole diameter
K	First outlet to second outlet
L	Greaseway length (centre of hole to inside tag face)
M	Inside face of tag to first outlet (centre of outlet)
P	Working area (length) of pin
Q	Tag thickness
U	Length of tag
V	Width of tag
W	Hole Diameter
X	Hole centre to hole centre

Drawing Code: RSGGC	Quantity Required:
Machine Make/Model:	Customer Order Number:
Induction Harden:	Customer:
Other:	Job Number:



Suppliers of NZ  
Made Hardened  
Steel Bushes & pins

19 Parkway Drive  
Mairangi Bay,  
Auckland  
09 475 9816  
sales@actibush.co.nz  
www.actibush.co.nz



### **ActiBush Product Overview:**

- **Hardened bushes in a wide range of standard sizes, dispatched within 24 hours;**
- **Hardened pre-drilled pin stock available in standard sizes for fast-turnaround pin supply;**
- **Standard tags, pin seals and shims always in stock and shipped within 24 hours;**
- **Customised bushes and pins made to order, usually dispatched within 3-5 working days.**

### **The ActiBush Advantage:**

- **NZ-made:** local stock, local delivery and local support for better, faster service.
- **Faster delivery times:** cuts downtime and gets your machinery back to work sooner.
- **Long-lasting products:** double or triple your running hours before replacement, keeping your equipment working for longer.
- **Buy with confidence:** deal with experienced, trustworthy and reliable people who want to give you better service and a better product than anyone else.

If you have any questions please email us at sales@actibush.co.nz or use the contact form on our website, and our friendly staff will be happy to help. Thanks again for joining our customer family. We appreciate your business.