

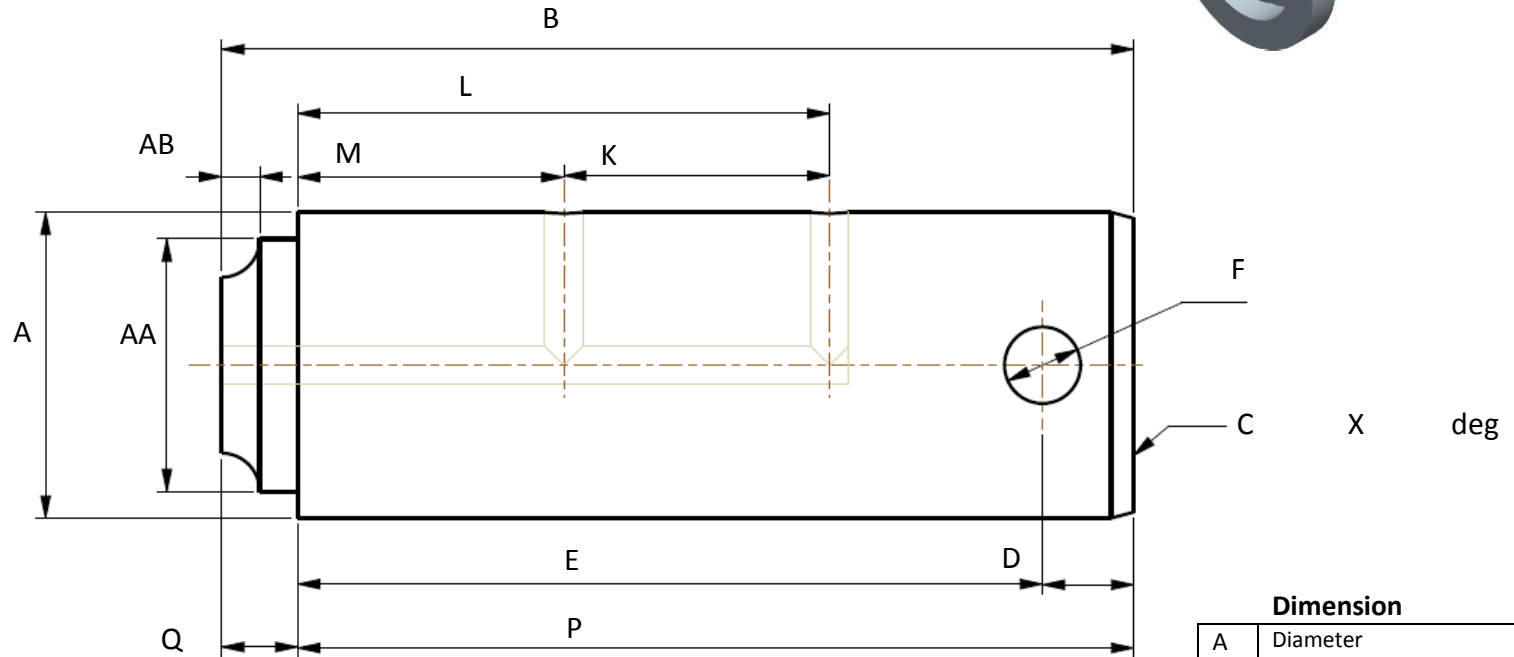
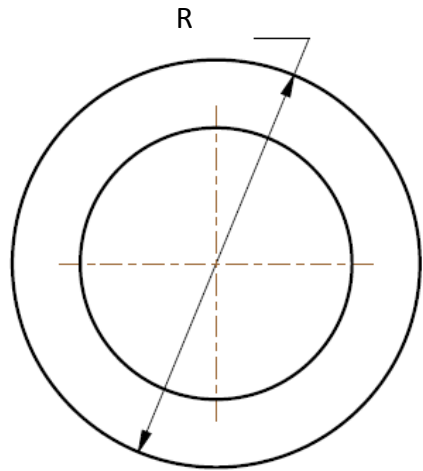
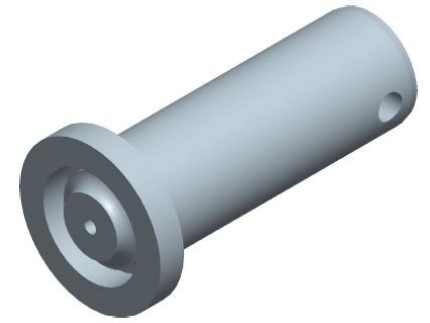
Email: sales@actibush.co.nz

Phone: 09 475 9816

Fax: 09 478 8447



ActiBush



Dimension

| Dimension | Description |
|-----------|---|
| A | Diameter |
| B | Length |
| C | Leading Edge |
| D | Leading end of pin to hole centre |
| E | End of pin to hole center |
| F | Hole diameter |
| K | First outlet to second outlet |
| L | Greaseway length (centre of hole to inside tag face) |
| M | Inside face of tag to first outlet (centre of outlet) |
| P | Working area (length) of pin |
| Q | Tag thickness |
| R | Outer diameter of tag |
| AA | Prep/Step Diameter |
| AB | Prep/Step Width |

| | | | |
|----------------------------|--------------|-------------------------------|--|
| Drawing Code: | OPBGG | Quantity Required: | |
| Machine Make/Model: | | Customer Order Number: | |
| Induction Harden: | | Customer: | |
| Other: | | Job Number: | |

| Pin Standard |
|---|
| Leading edge – 3mm x 15° (default unless defined above) |
| Greaseway – 5mm |
| Counterbore – 1/8 BSP |
| Undercut for recessed grease nipple – 21mm |